



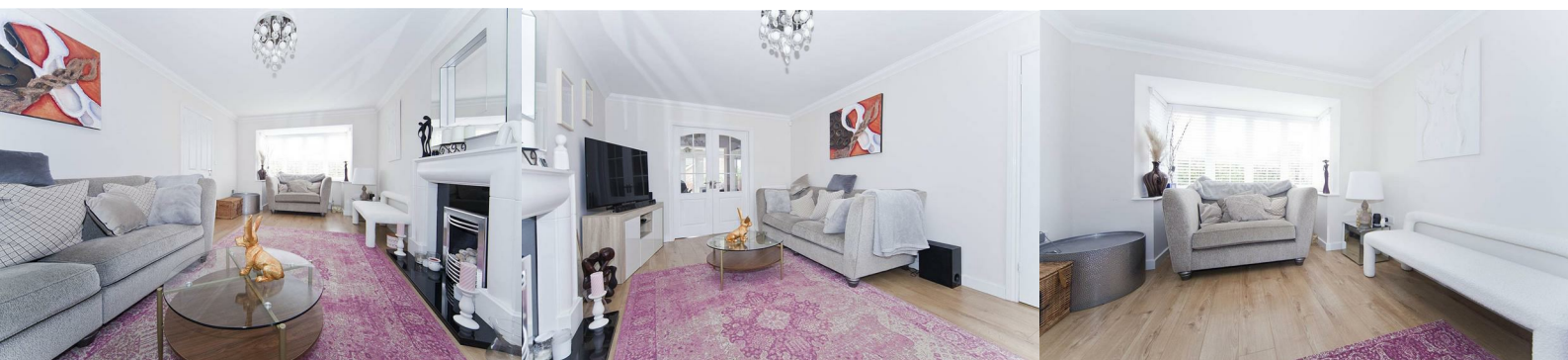
## 6 Kielder Road

, Hartlepool, TS26 0QF

**Offers In The Region Of £329,000**



Igomove take immense pleasure in offering to the market this fabulous five bedroom detached house situated in a highly desirable location, it offers a host of key elements which include; five well proportioned bedrooms ( master with en suite facilities), lovely family bathroom, spacious lounge, superb dining room/ summer room, fabulous kitchen, entrance hall, guest cloakroom, garage, well kept gardens, driveway, uPVC double glazing, gas central heating, fitted blinds, stylish decor, freehold.



Beautiful facade, excellent end plot, extensive block paved driveway to garage, front door into;

Inviting entrance hall with stairs to the first floor, karndean flooring, dado rail, decorative coving, immaculate decor.

Stunning lounge with bay window to the front elevation, decorative coving, impeccable decor, feature fireplace with chrome inset pebble effect fire, laminate flooring, double doors opening to;

Dining room/ summer room benefitting from French doors opening to the rear garden, laminate flooring decorative coving, stylish decor

Guest cloakroom comprising WC and wash basin in desirable white porcelain.

Splendid dining kitchen fitted with an array of sleek cabinetry, stunning complimentary surfaces, integrated double oven, integrated ceramic hob, statement extractor hood, inset sink with chrome mixer tap, integrated wine cooler, column anthracite radiators, built in breakfasting table, half glazed rear access door.

To the first floor landing there is a fitted storage cupboard, access to;

Master double bedroom with window to the front elevation, immaculately presented, fitted wardrobes and access to;

Stylish en suite comprising close coupled WC, vanity wash basin, shower enclosure, chrome heated towel radiator, stunning tiling.

Bedroom two is also a large double with rear elevation window and fitted wardrobes, pristine decorative order.

Bedroom three is another double situated to the front, excellent decor.

Bedroom four is located to the rear, delightful decor.

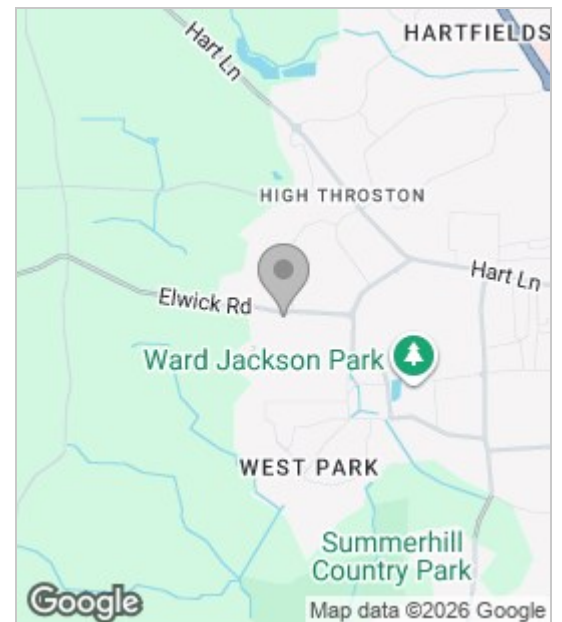
Bedroom five is of single proportions with rear aspect views, superb decor.

The family bathroom comprises bath with bath over bath shower, glass shower screen, concealed cistern WC and vanity wash basin combination unit, fabulous tiling to walls and floor.

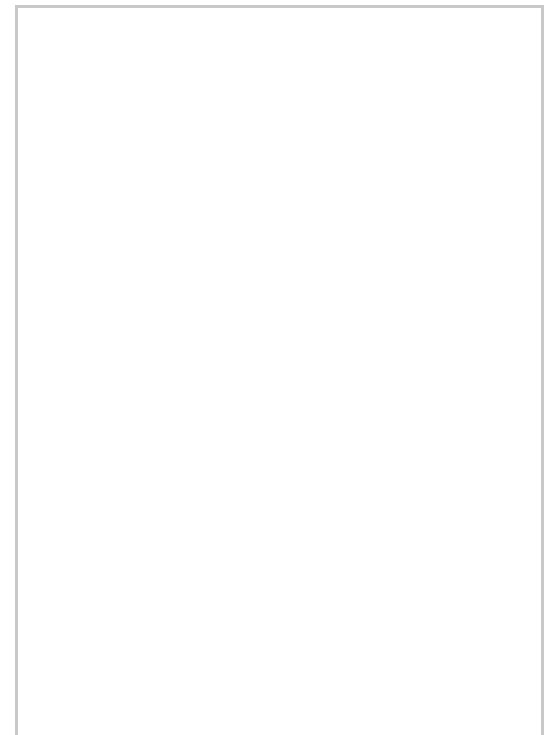
To the rear is a well tendered, enclosed lawned garden, excellent patio and seating areas, raised flower beds.

Igomove urge early viewing to secure this stylish and spacious home in a highly desirable location.

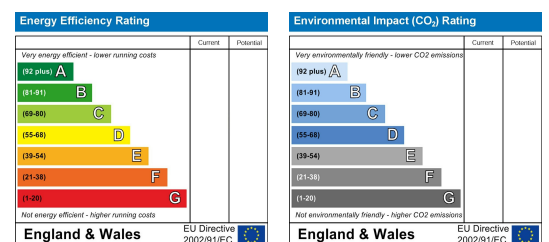
## Area Map



## Floor Plan



## Energy Efficiency Graph



These particulars, whilst believed to be accurate are set out as a general outline only for guidance and do not constitute any part of an offer or contract. Intending purchasers should not rely on them as statements of representation of fact, but must satisfy themselves by inspection or otherwise as to their accuracy. No person in this firm's employment has the authority to make or give any representation or warranty in respect of the property.